

# Tetra-Motion – Every which way but loose

## Office & Workshop

1020 Kyogle Road, Dum Dum NSW, 2484

02 6679-4001

Contact: Peter Schwarzel 0408 681 932

see also [www.carbon-works.com.au](http://www.carbon-works.com.au)

248-55 Brevis Kit Parts stocked by Tetra-Motion

All prices AUD


Part No & Name	Price pu	Other Information
248-32 Motor Mount	\$8 AUD	Also for belt tensioner
248-10L Column Assm	\$33	
248-10R Column Assm	\$33	
248-28 Clamp	\$3	
248-41 Belt Anchor	\$4	Also for belt tensioner
248-34 Tensioner	\$3	
248-09 P5-10-20 Pulley Assm	\$50	Includes bearings & fasteners
248-45 Dia 43mm Mount	\$20	
248-49 Dia43 Utility Clamp	\$60	
248-27A Bearing Plate	\$4	
248-38 Motor Mount Z	\$9	
248-05 Stepper Motor	\$22	
248-17 Z Drive Motor	\$50	
248-40 Nut Bracket	\$5	
Nuts and bolts Kit	\$15	
248-03 20mm Cars each	\$60	\$78 for high preload
248-02 20mm Y rails per m	\$130	Brevis 2x740mm
248-12 20mm X rail per m	\$130	Brevis 1x860mm gantry
248-16 20mm Z rail per m	\$130	Brevis 1x320mm
248-21 10mm AT belt per metre		Brevis 5.5m
12 core cable per m		Brevis

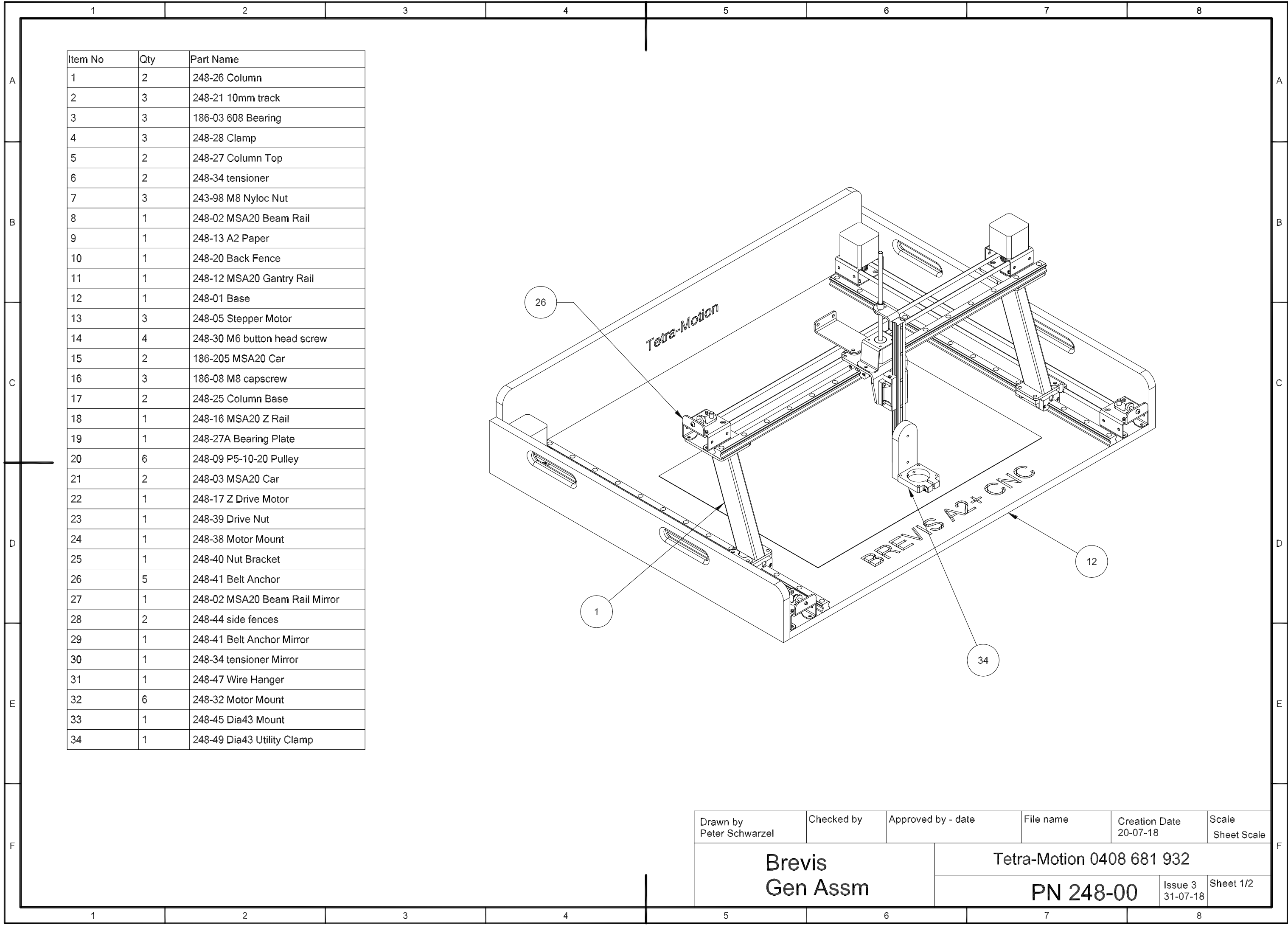
## Brevis Parts Shopping List

Part No & Name	Estimated Price per unit	Other Information
Power source 24V, 8A	\$23	stepperonline
Motor controller 4 axis	\$85	stepperonline
GPO's	\$13	Bunnings
17mm plywood	\$60	Bunnings ot hardware
Jiffy Boxes	\$6-\$15	Jaycar (plastic or metal)
CAD System	Free-\$5000+	Makers choice
Motion Controller UC100	\$199	My Tool Store
CAM UCCNC	\$99	My Tool Store
Other CAM System	Free-\$5000+	
4 core Signal wire		Jaycar – Use microphone wire
4 core Power Wire		Jaycar – Use Heavy Speaker wire.
Computer with USB port	Free - \$\$\$	Makers choice

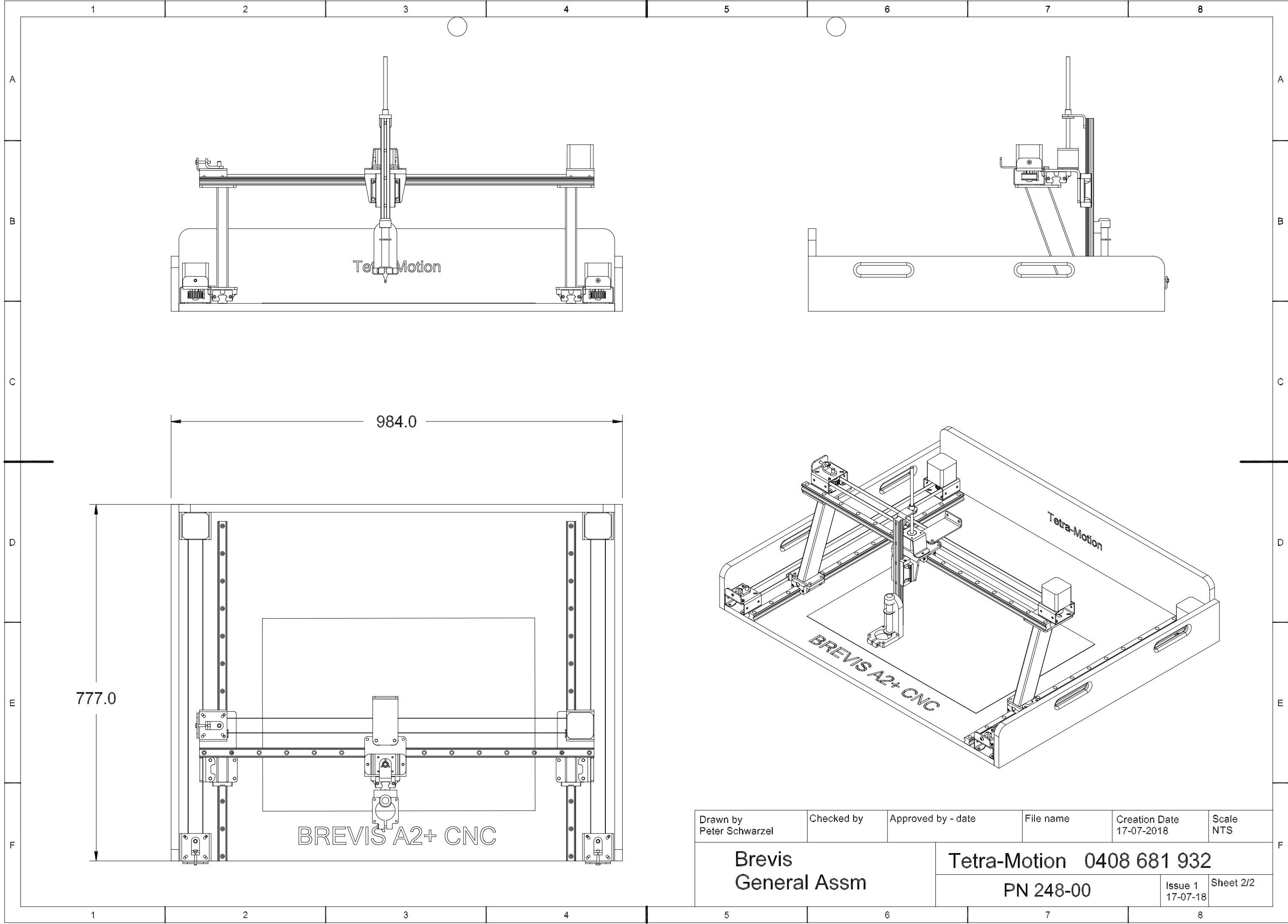
Any questions please ask

Designer & Founder

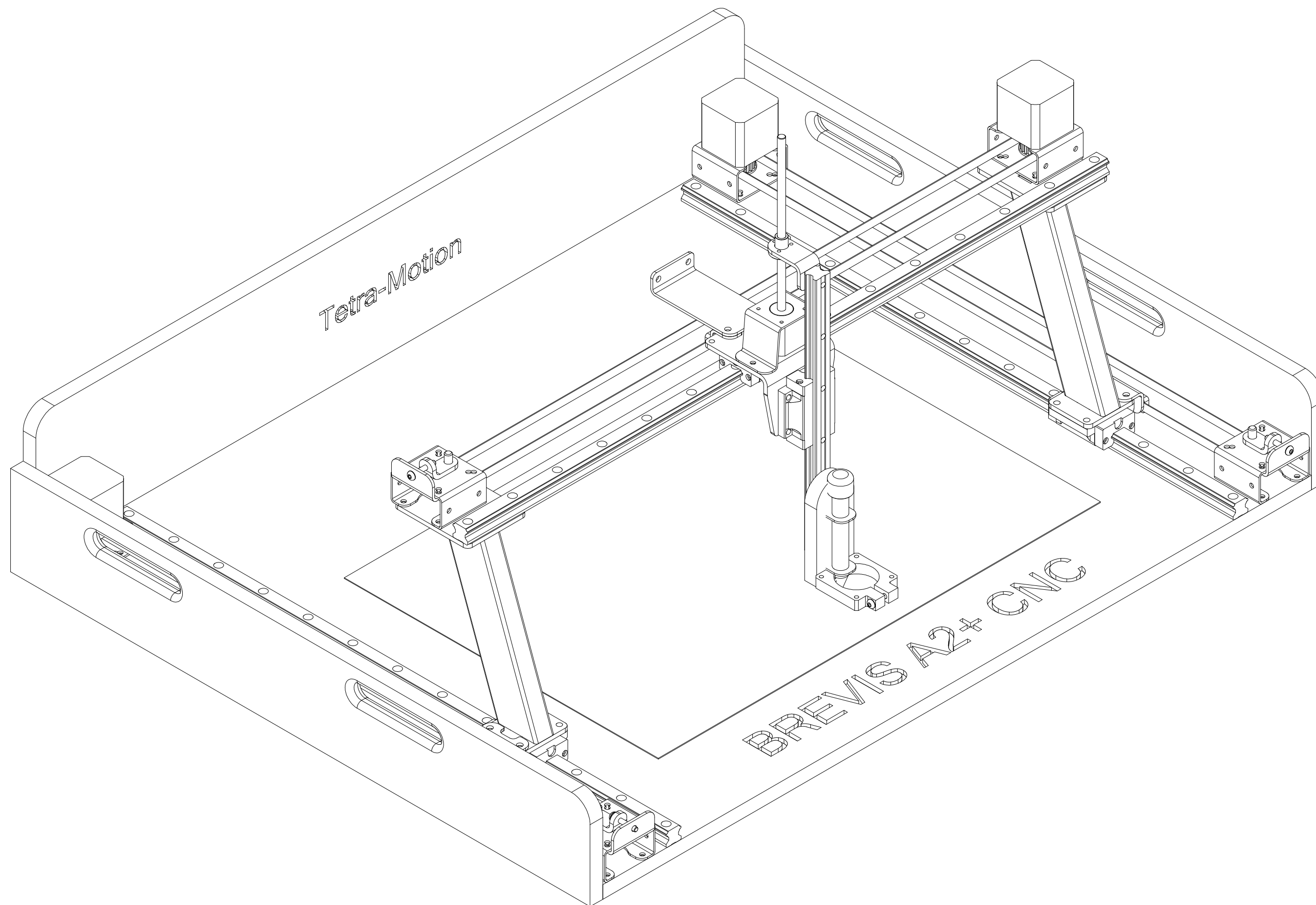


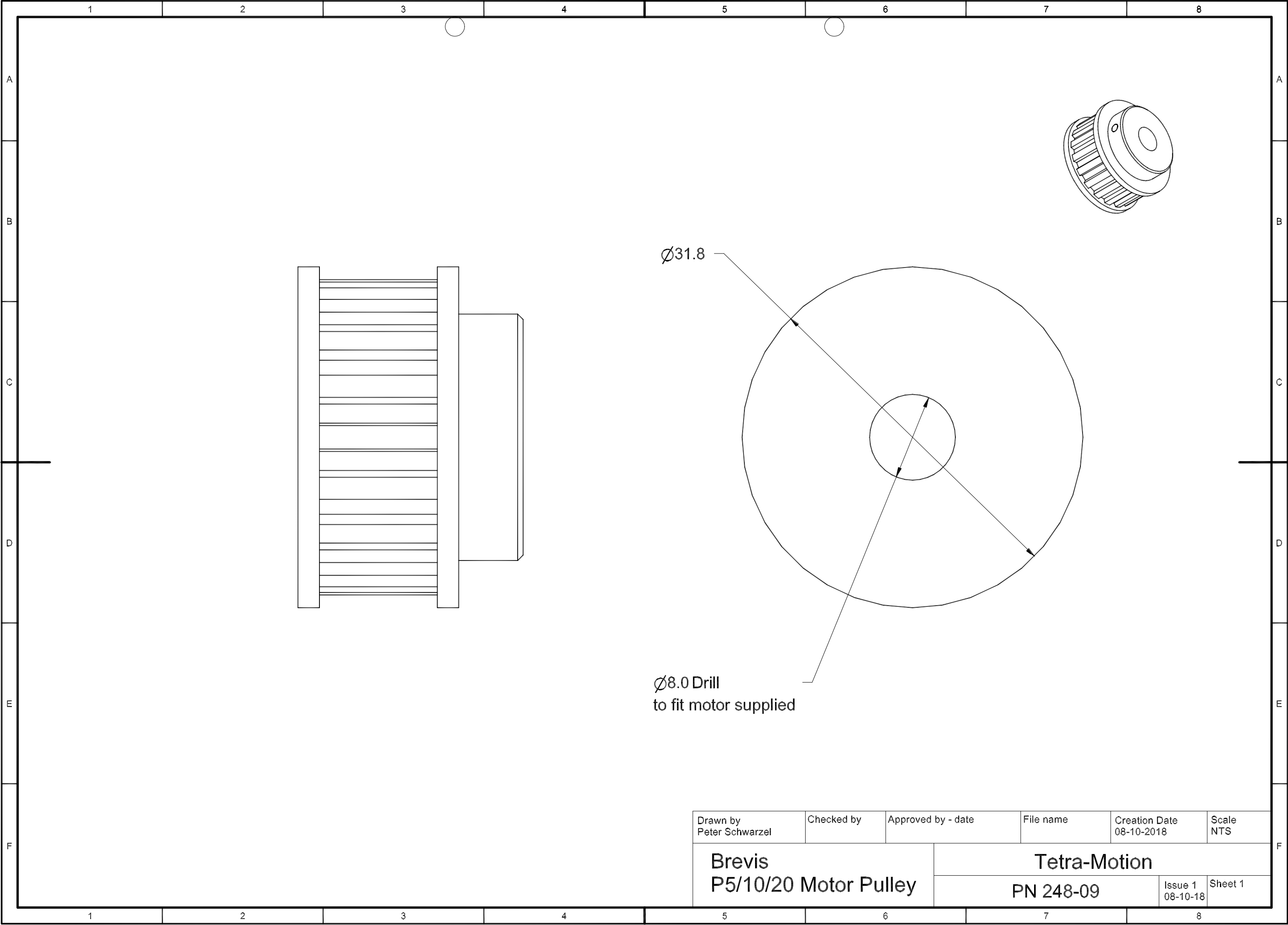


Drawn by Peter Schwarzel	Checked by	Approved by - date	File name	Creation Date 20-07-18	Scale Sheet Scale
Brevis Gen Assm			Tetra-Motion 0408 681 932		
			PN 248-00	Issue 3 31-07-18	Sheet 1/2

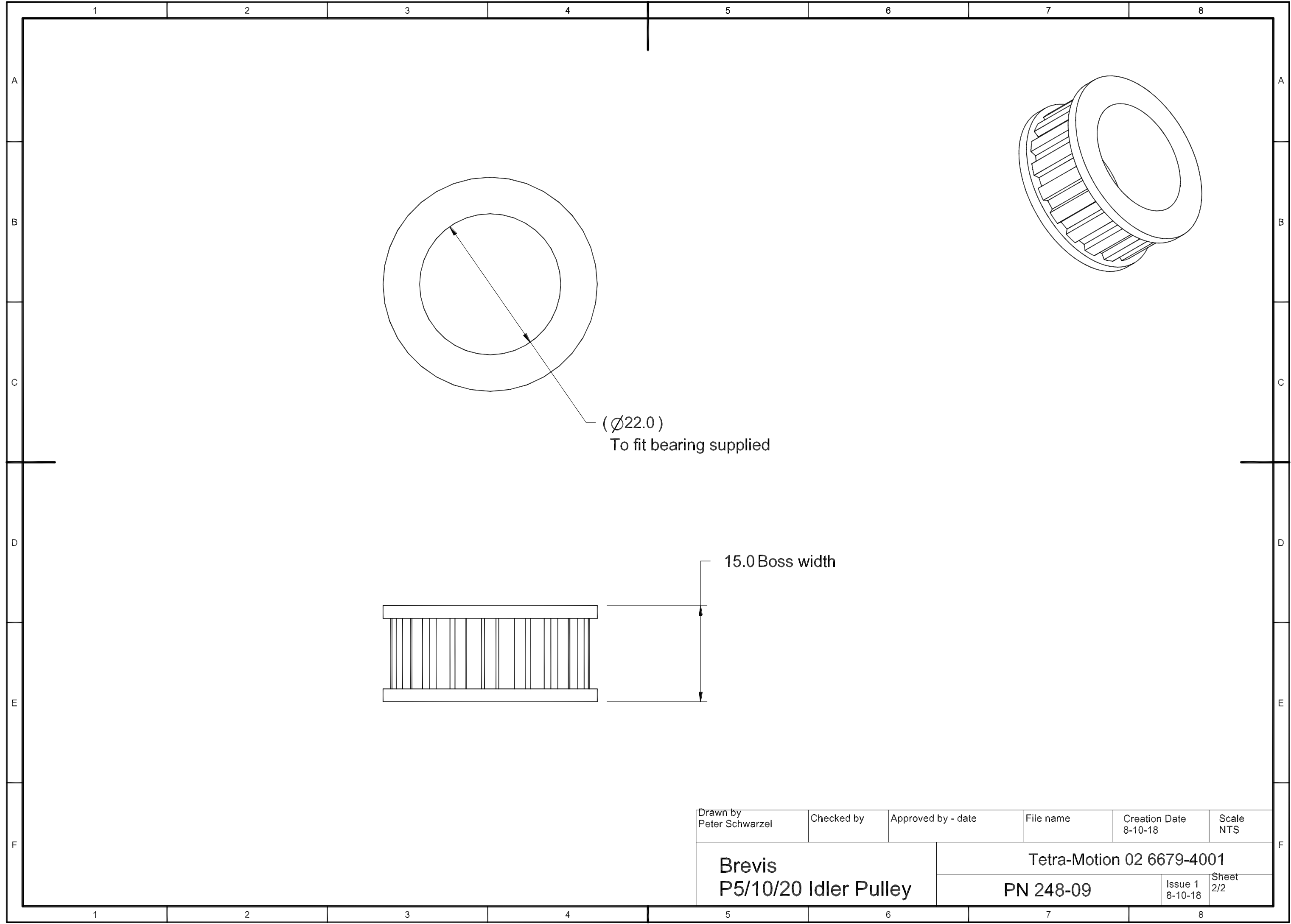


Drawn by Peter Schwarzel	Checked by	Approved by - date	File name	Creation Date 17-07-2018	Scale NTS
Brevis General Assm			Tetra-Motion 0408 681 932		
			PN 248-00		Issue 1 17-07-18 Sheet 2/2

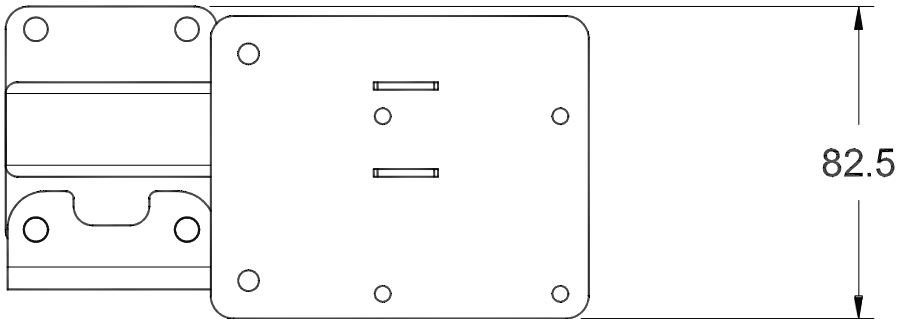
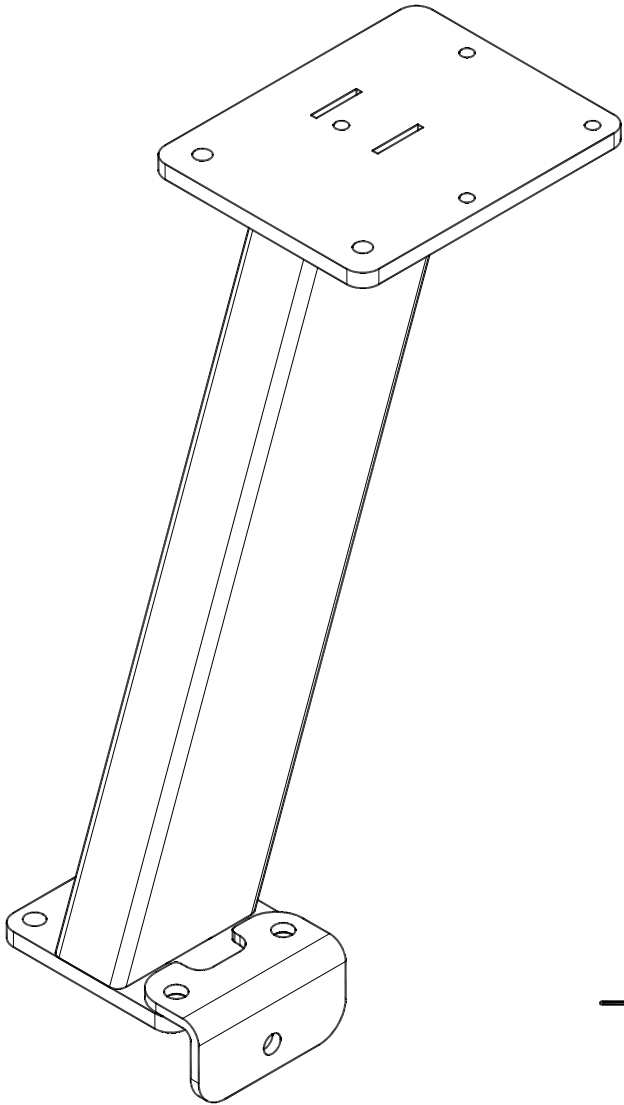
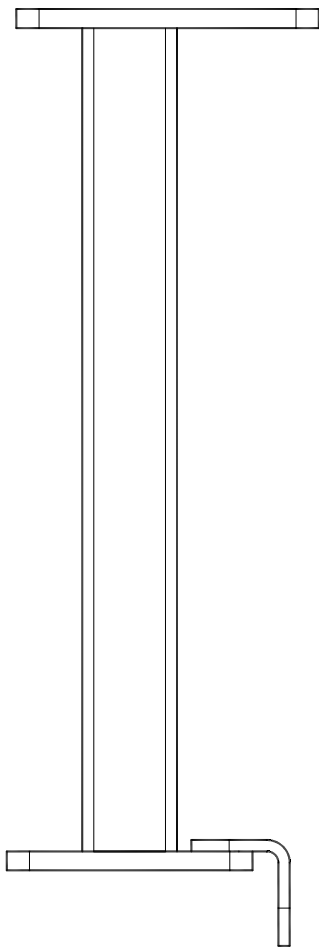
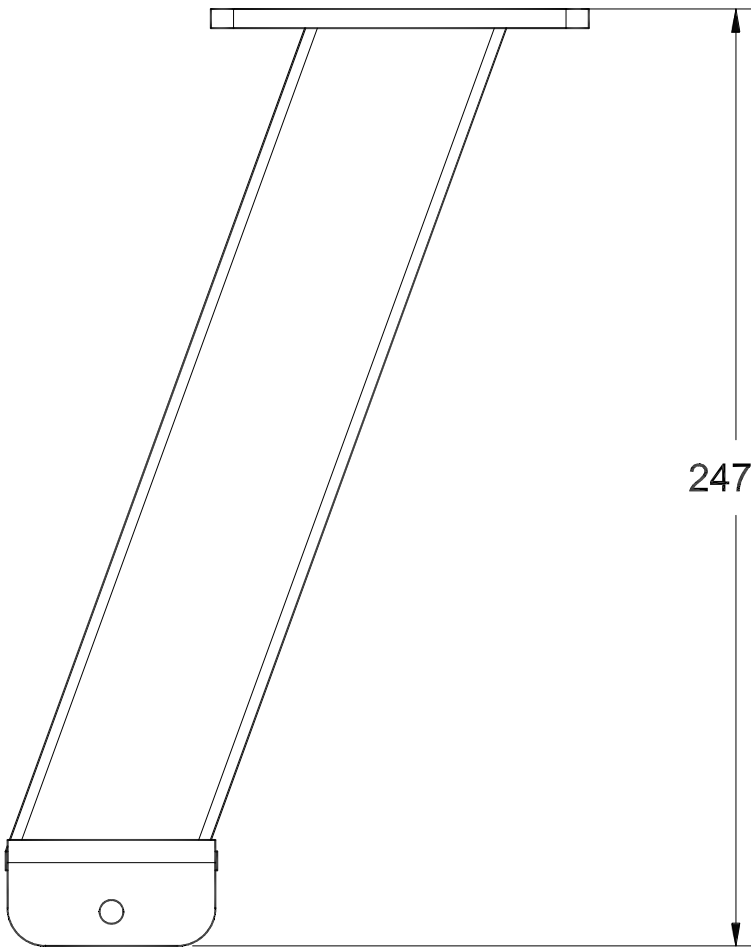




Drawn by Peter Schwarzel	Checked by	Approved by - date	File name	Creation Date 08-10-2018	Scale NTS
Brevis P5/10/20 Motor Pulley			Tetra-Motion		
			PN 248-09	Issue 1 08-10-18	Sheet 1

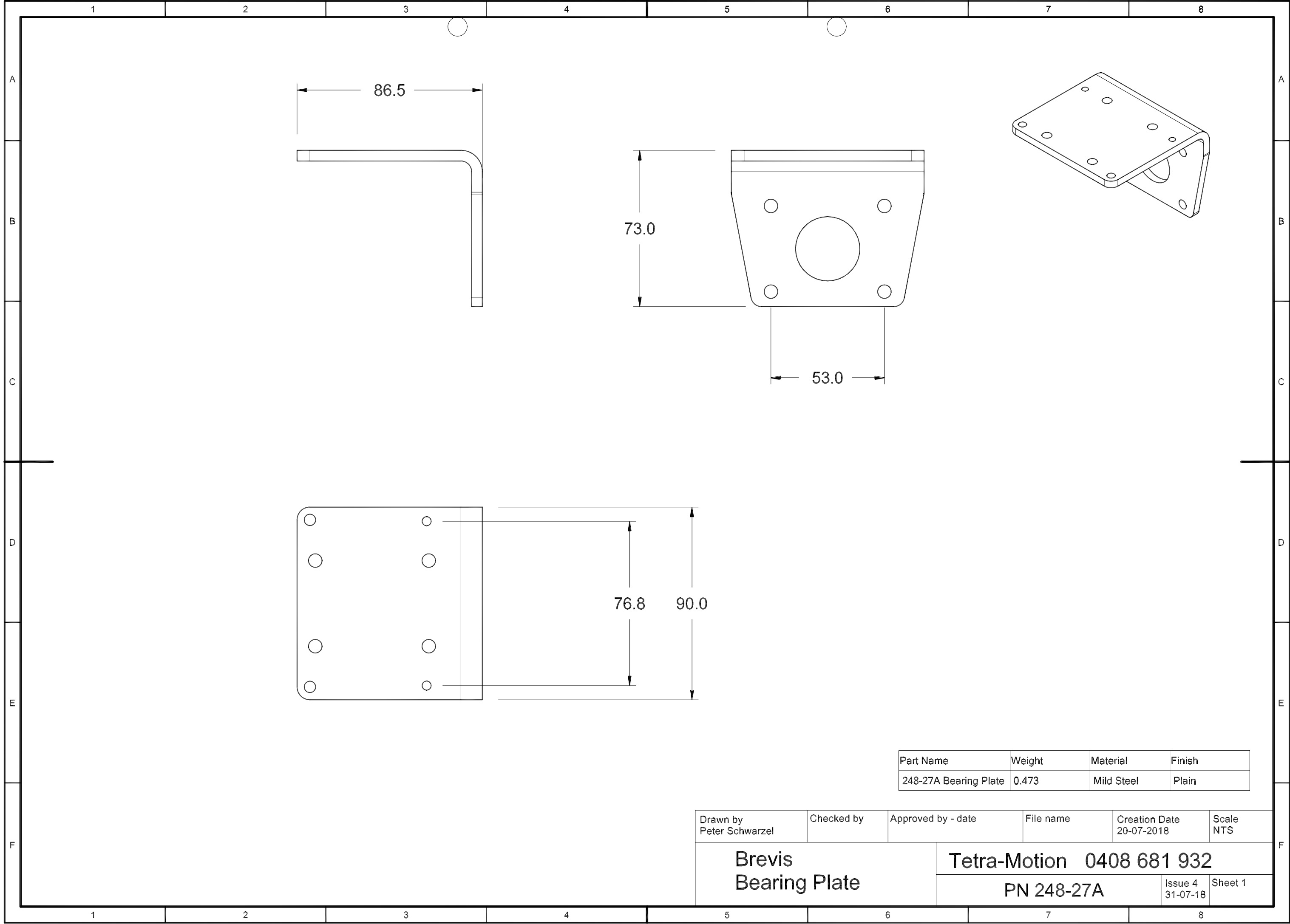


Part Name	Material	Weight
248-26 Column	Mild Steel	0.507
248-27 Column Top	Mild Steel	0.307
248-25 Column Base	Mild Steel	0.131
248-41 Belt Anchor	Wrought Steel	0.055



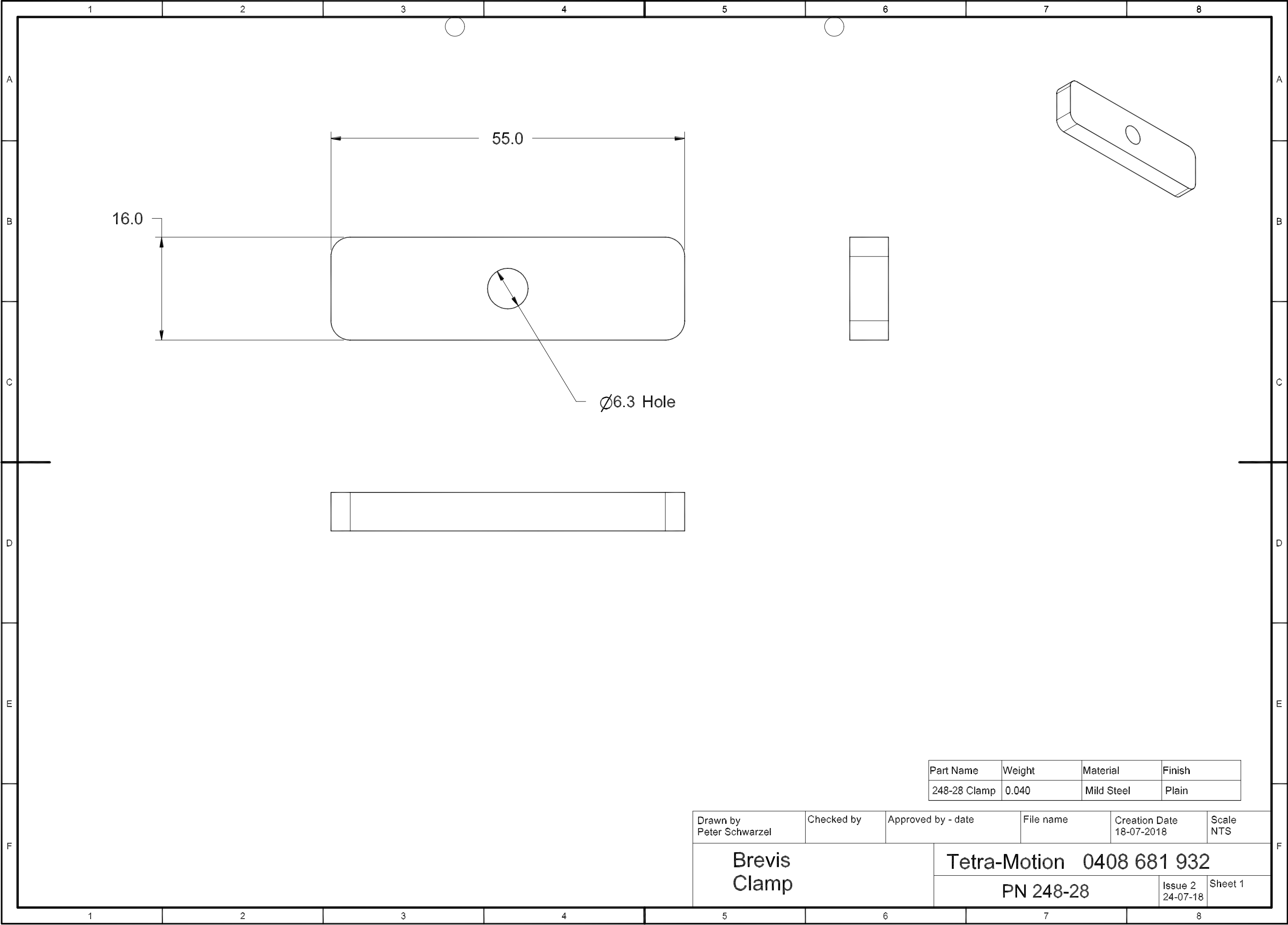
Drawn by Peter Schwarzel	Checked by	Approved by - date	File name	Date 10-04-2018	Scale NTS
Brevis Column Assm			Tetra-Motion 0408 681 932		
			PN 248-10		Issue 1 Sheet 1





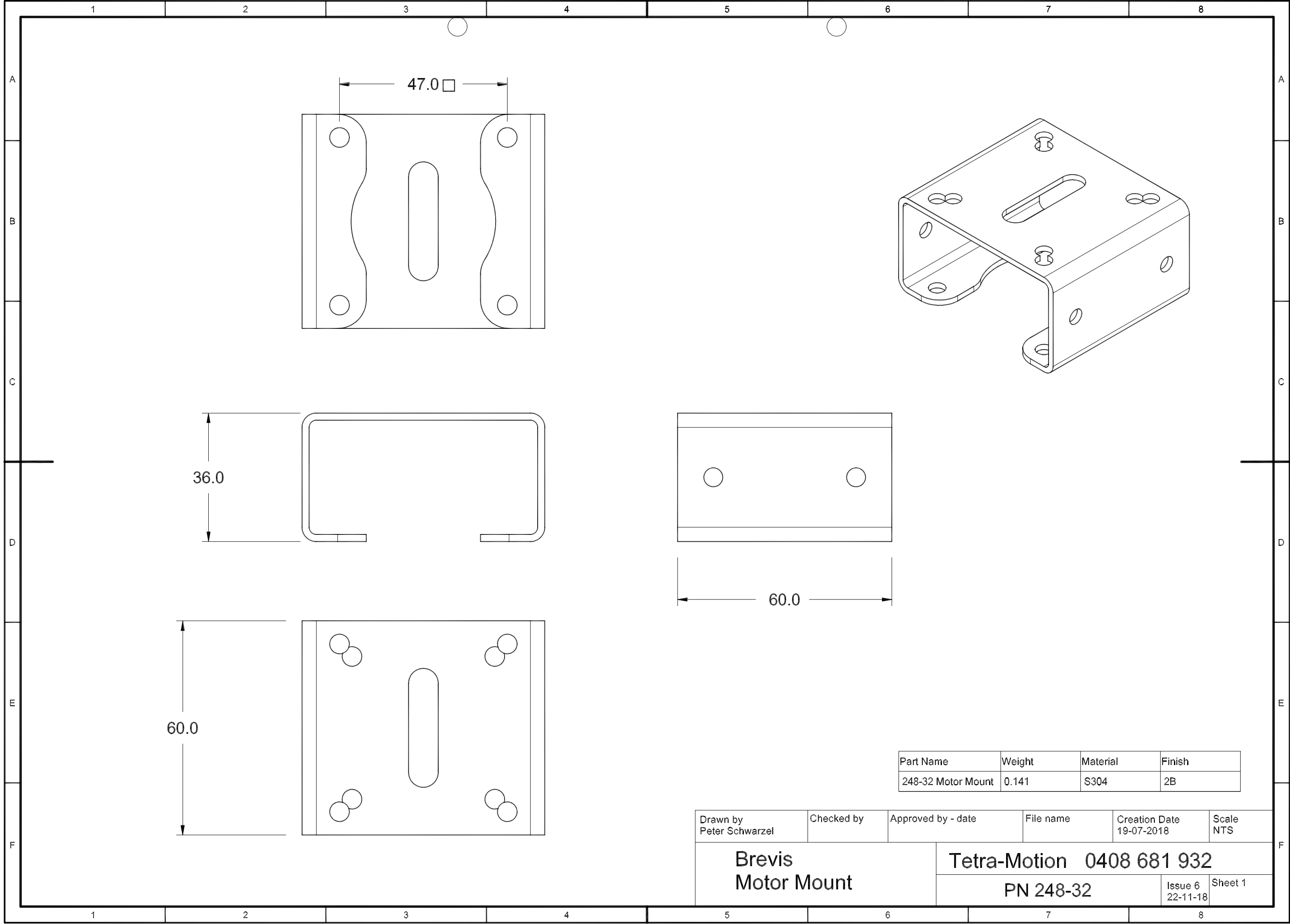
Part Name	Weight	Material	Finish
248-27A Bearing Plate	0.473	Mild Steel	Plain

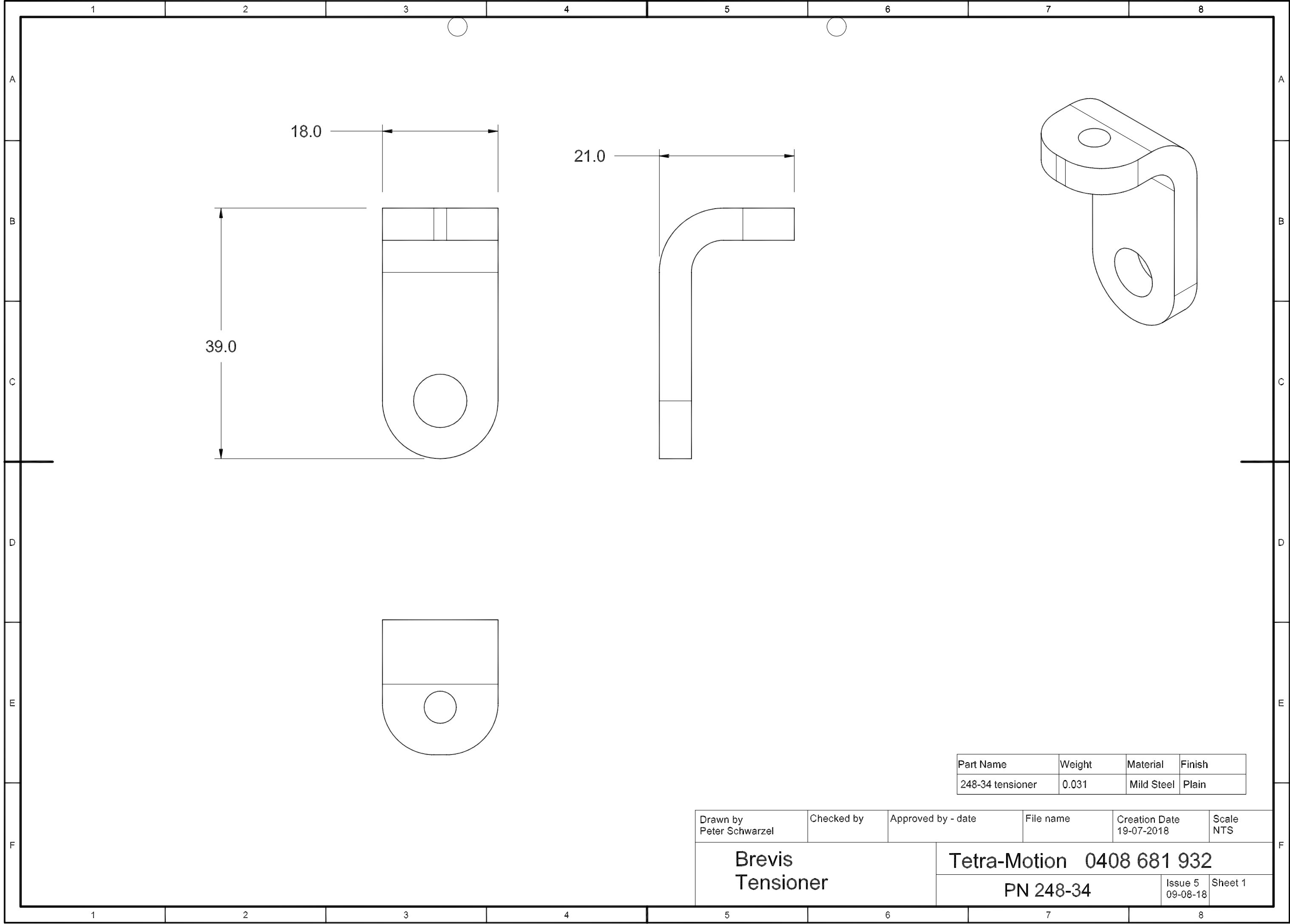
Drawn by Peter Schwarzel	Checked by	Approved by - date	File name	Creation Date 20-07-2018	Scale NTS
Brevis Bearing Plate			Tetra-Motion 0408 681 932		
			PN 248-27A		Issue 4 31-07-18 Sheet 1

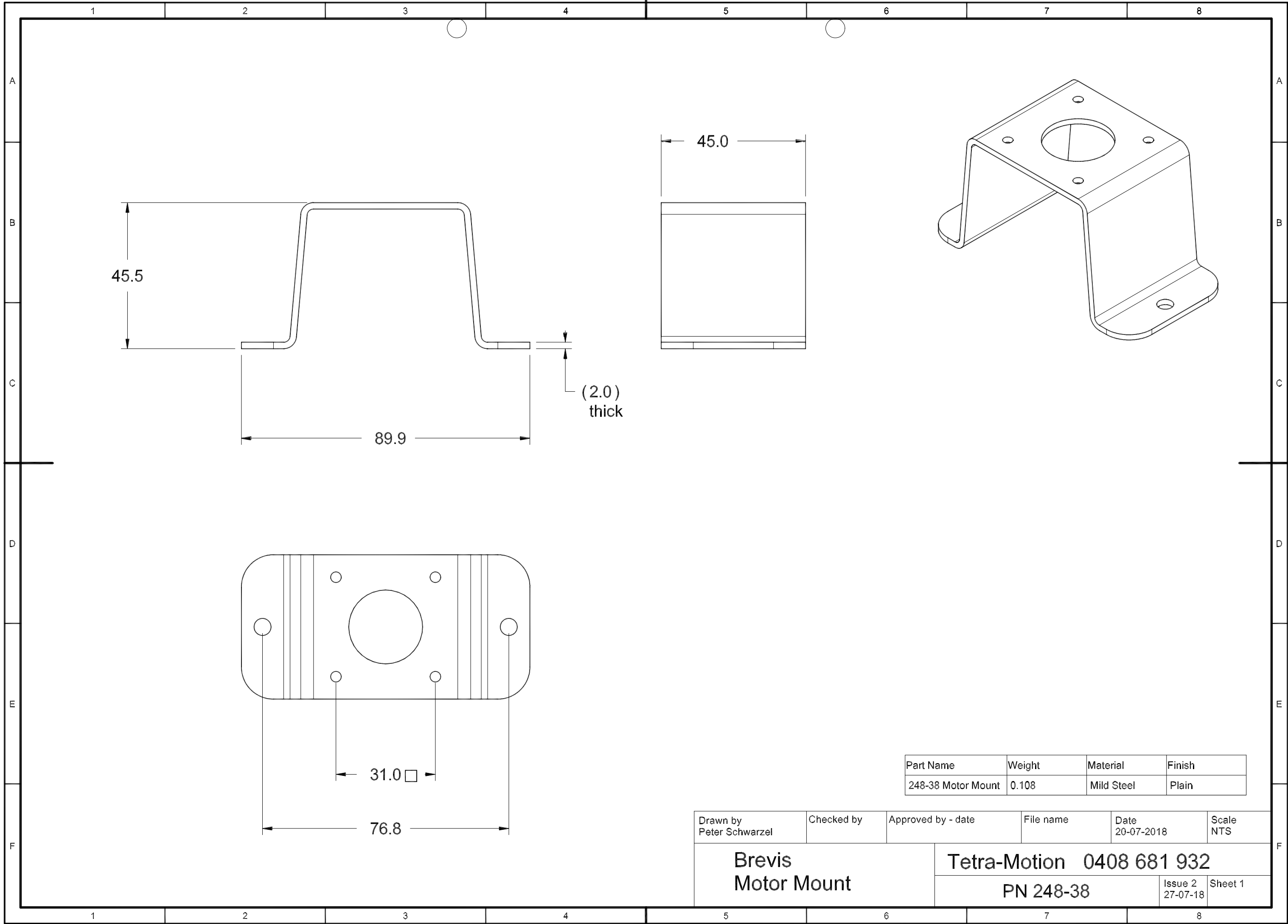


Part Name	Weight	Material	Finish
248-28 Clamp	0.040	Mild Steel	Plain

Drawn by Peter Schwarzel	Checked by	Approved by - date	File name	Creation Date 18-07-2018	Scale NTS
Brevis Clamp			Tetra-Motion 0408 681 932		
			PN 248-28		Issue 2 24-07-18 Sheet 1

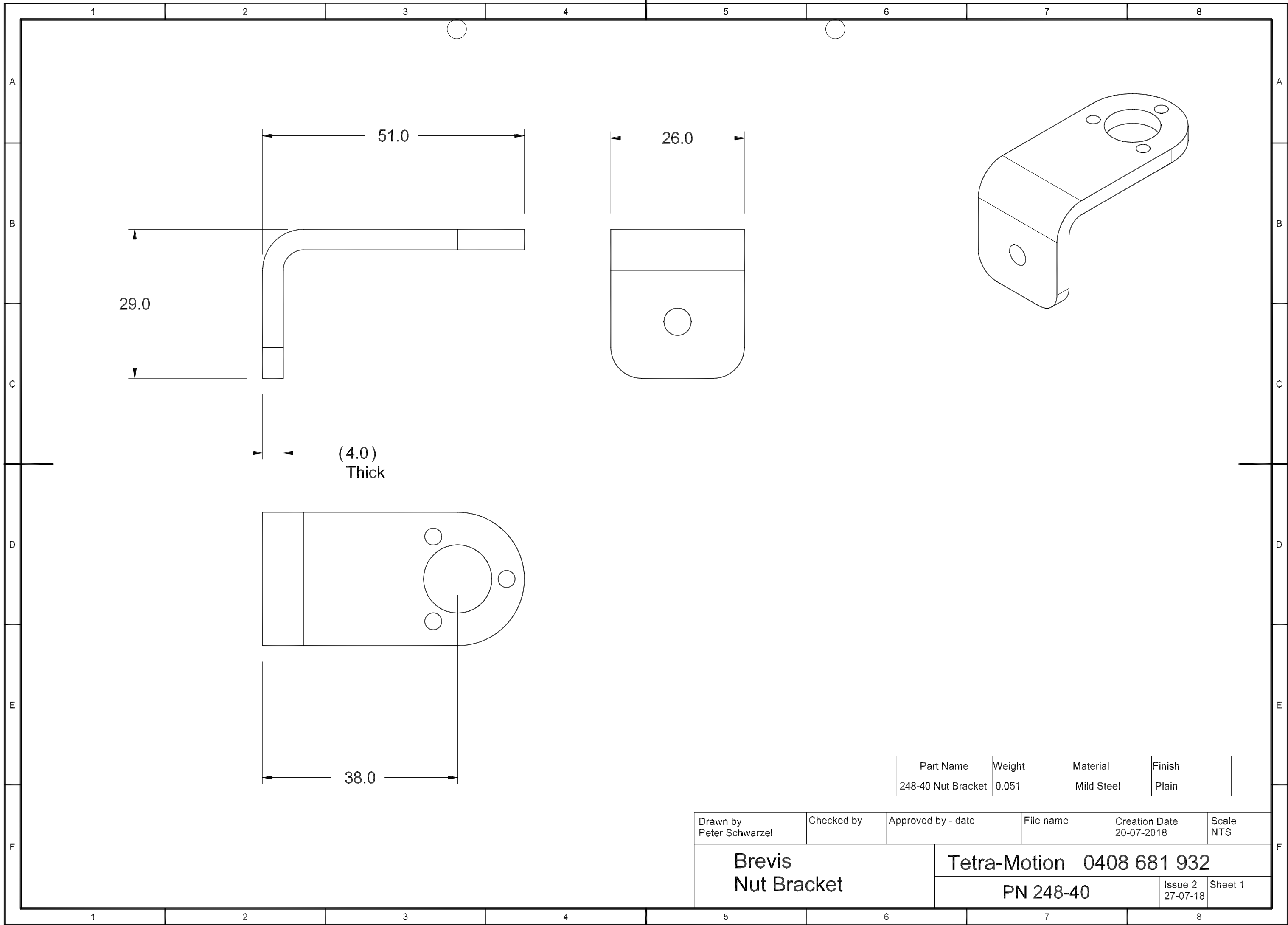






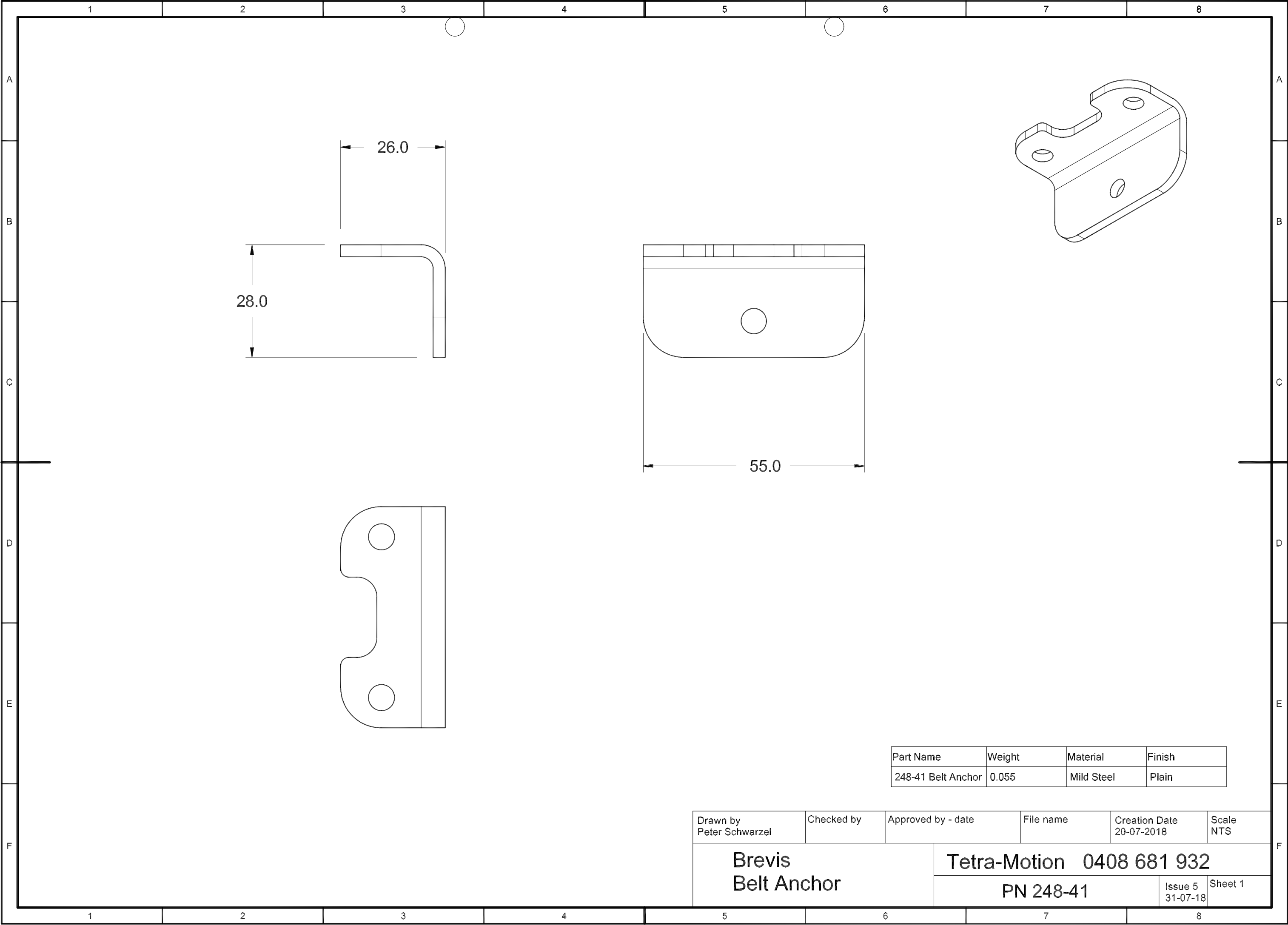
Part Name	Weight	Material	Finish
248-38 Motor Mount	0.108	Mild Steel	Plain

Drawn by Peter Schwarzel	Checked by	Approved by - date	File name	Date 20-07-2018	Scale NTS
Brevis Motor Mount			Tetra-Motion 0408 681 932		
			PN 248-38		Issue 2 27-07-18 Sheet 1



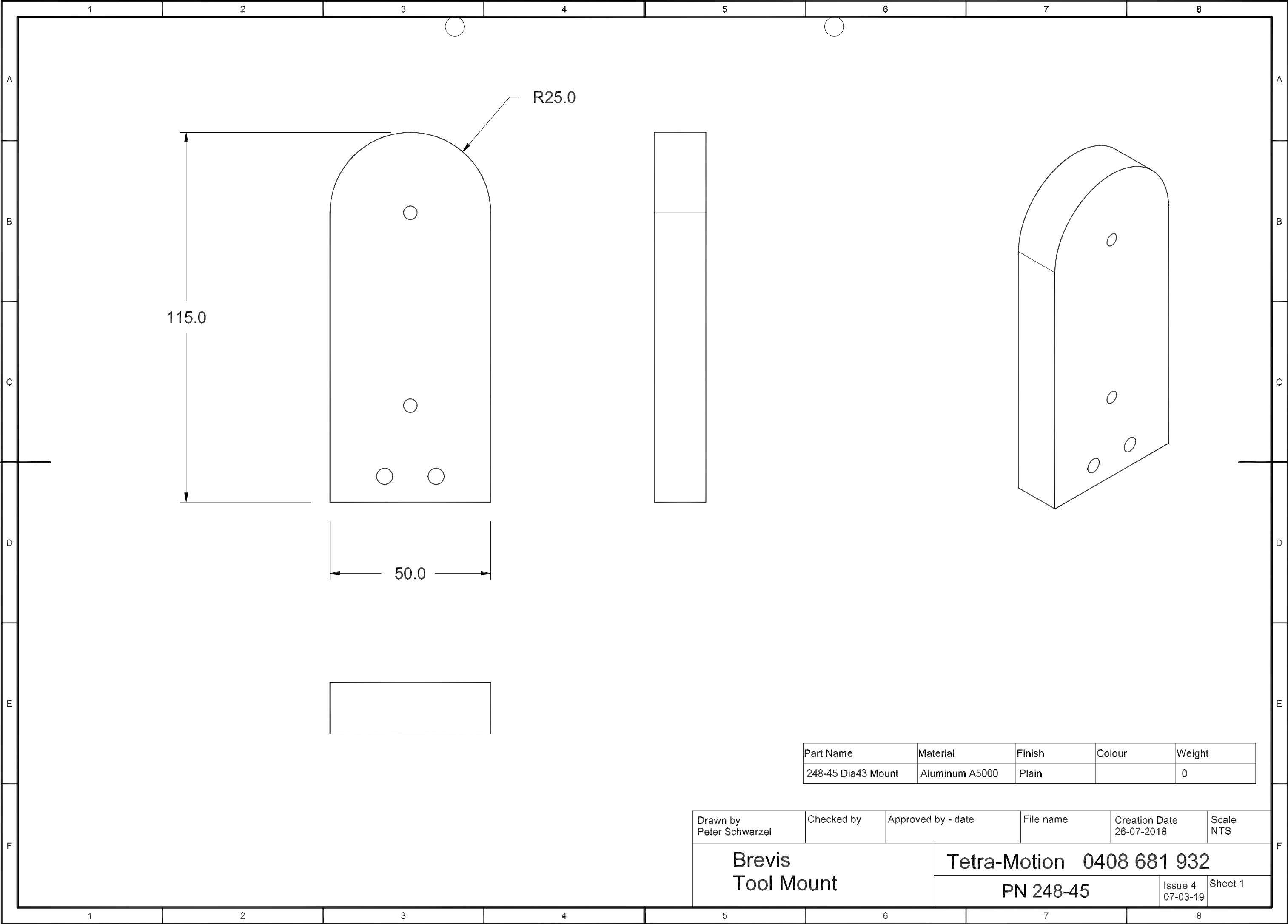
Part Name	Weight	Material	Finish
248-40 Nut Bracket	0.051	Mild Steel	Plain

Drawn by Peter Schwarzel	Checked by	Approved by - date	File name	Creation Date 20-07-2018	Scale NTS
Brevis Nut Bracket			Tetra-Motion 0408 681 932		
			PN 248-40		Issue 2 27-07-18 Sheet 1

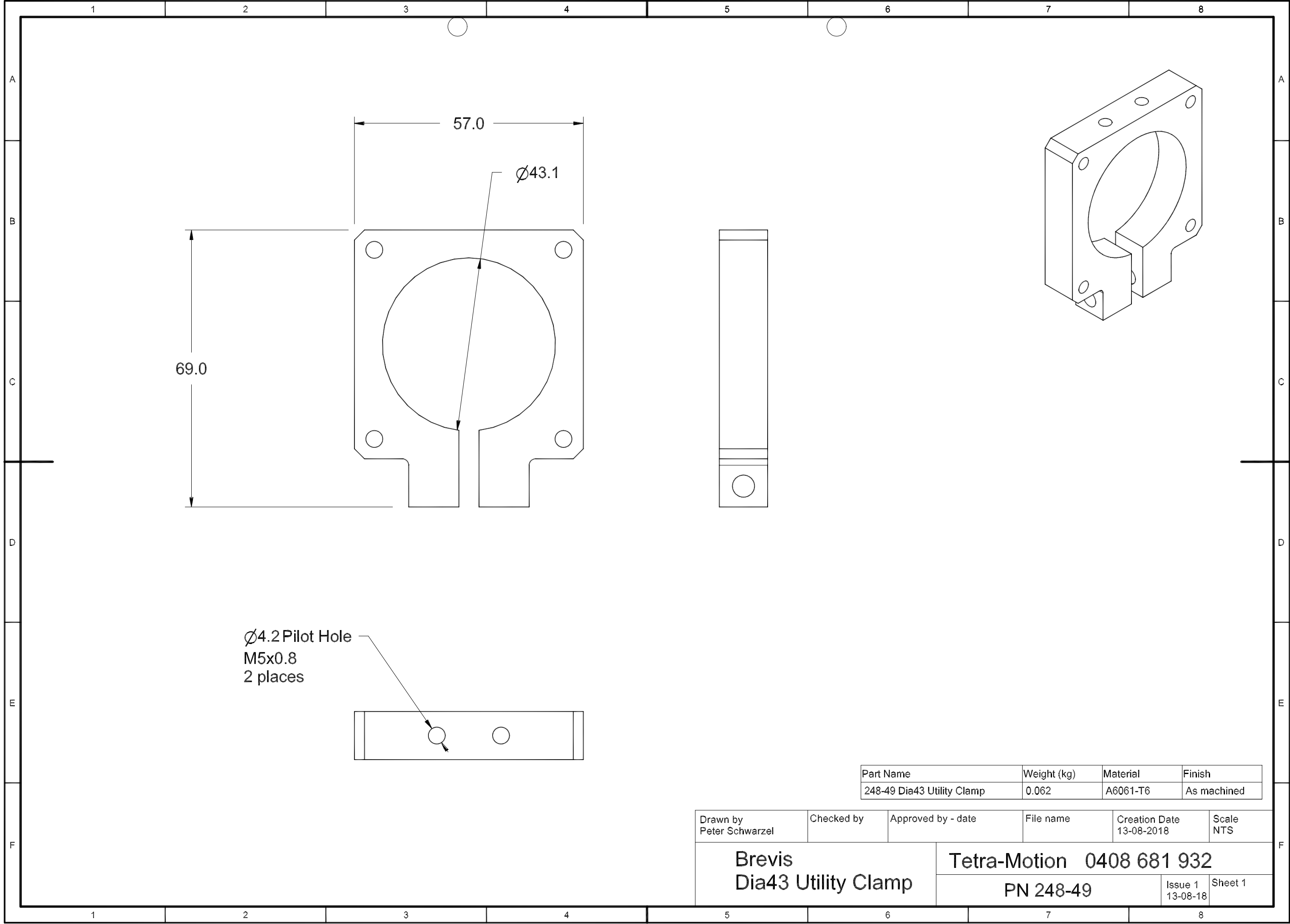


Part Name	Weight	Material	Finish
248-41 Belt Anchor	0.055	Mild Steel	Plain

Drawn by Peter Schwarzel	Checked by	Approved by - date	File name	Creation Date 20-07-2018	Scale NTS
Brevis Belt Anchor			Tetra-Motion 0408 681 932		
			PN 248-41		Issue 5 31-07-18 Sheet 1







Part Name	Weight (kg)	Material	Finish
248-49 Dia43 Utility Clamp	0.062	A6061-T6	As machined

Drawn by Peter Schwarzel	Checked by	Approved by - date	File name	Creation Date 13-08-2018	Scale NTS
Brevis Dia43 Utility Clamp			Tetra-Motion 0408 681 932		
			PN 248-49		Issue 1 13-08-18 Sheet 1